

# Improving conservation in agricultural landscapes: Can we close the Value-Action Gap?

Meredith Root-Bernstein

UMR Sciences pour l'Action et le Développement-  
Activités Produits Territoires, INRA, AgroParisTech,  
Université Paris-Saclé

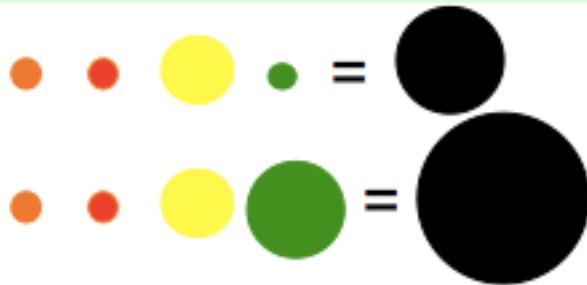


# What is the relationship between values and actions?

- The Value-Action Gap describes the inconsistency between what people value and the actions they take— a problem for

**Personal dimension, a gradient of possibilities:**

Sum dimensions of value



Context-dependent valuation



**Governance dimension, a gradient of possibilities:**

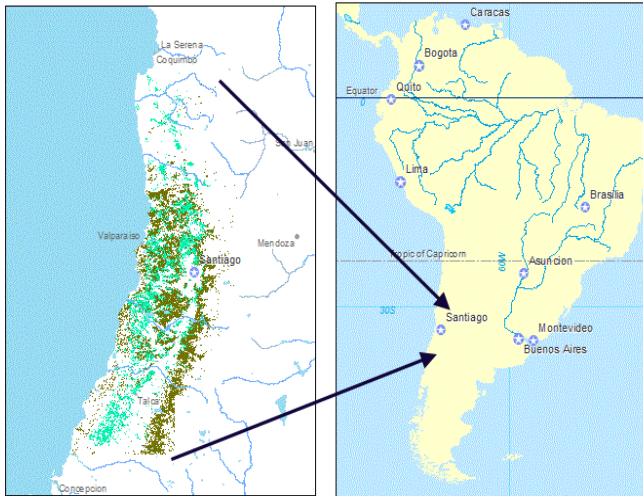
Policy-practice gap: work-arounds

*Cf. anthropology of bureaucracy and policy*

Policy channels values

*cf. conservation science*

# What factors motivate farmers to manage their lands in certain ways?



- Central Chile's natural habitats are highly fragmented in an agricultural matrix
- There is little integration of environmental and agricultural policies

4 sites, 3 with local « agri-environment » programmes:

- Pintué: agriculture and private conservation areas
- Alhué: agriculture, private conservation, and the site of the GEF project « conservation landscape » municipal planning tool.
- Comunidad Agrícola de Salala: cooperative within the Man and Biosphere Reserve La Campana- Lago Peñuelas
- Doñihue: agriculture, vineyards, within the Bosque Modelo de Cachapoal programme of the FAO



# Methods and Expected Results

- Questionnaires and interviews to understand farmers' models of what motivates management decisions –where they fall on the personal and governance dimensions
- Agronomic analyses of typical farm types
  - Carried out by student Arthur Bondeau, ISTOM
- Ecological surveys to determine the successional and conservation status of farmers' lands
- => Lead to a better understanding of how to work with farmers to improve ecological conservation in central Chile